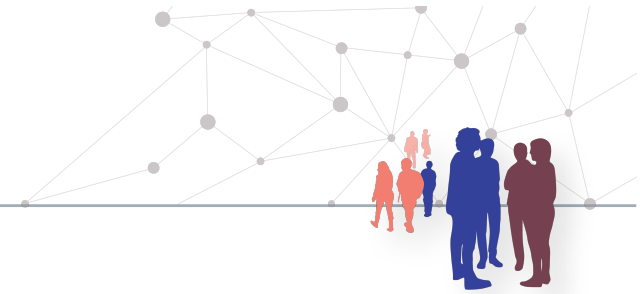




**Universität
Zürich**^{UZH}

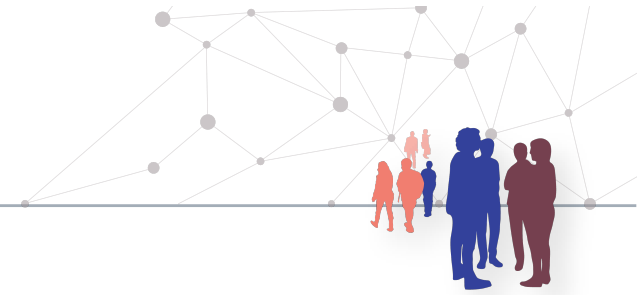
Digital Society Initiative



DSI Infrastructure & Labs – Info Event

29 April 2022

Markus Christen, Gabriele Prohaska



Agenda

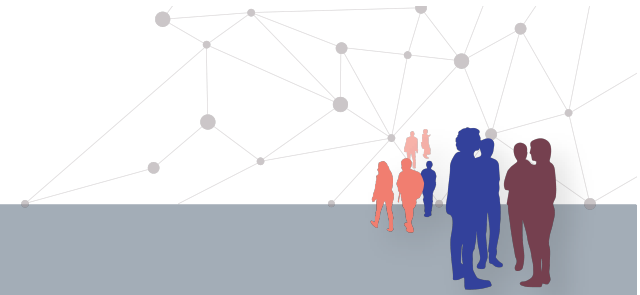
- Approved Infrastructure & Labs so far
- Definition of Infrastructure & Labs
- Key Aspects for the Committee Members
- Budget & Matching Funds
- Discussion

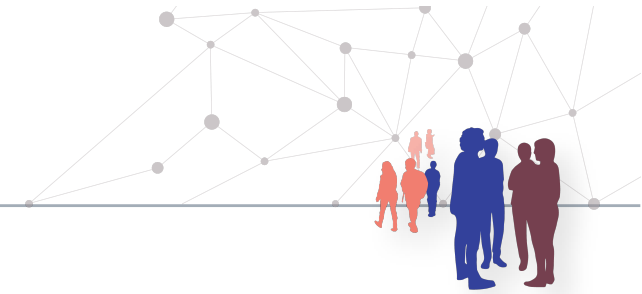


**Universität
Zürich**^{UZH}

Digital Society Initiative

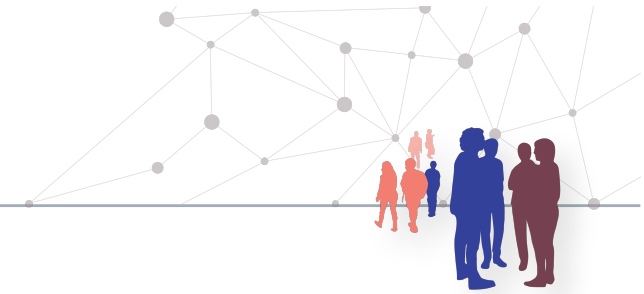
Approved Infrastructure & Labs





Infrastructure & Labs – Call FS 2021

- **Data Donation Lab:** Promote and facilitate research with data gathered through data donations; provide an infrastructure to collect digital trace data through data donations by study participants; provide a platform for the transdisciplinary exchange among researcher working with such data.
- **Z-Pool-Tool:** Creation of an integral technical platform for all existing and future volunteer pools for the DIZH universities; standardize the platforms of existing pool operators at UZH, which will enable synergies in terms of technical support and further technical development.
- **DigiVox Panel Survey Infrastructure:** A national survey panel specifically dedicated to the study of the social, economic, cultural, political and policy implications of digital media and their interplay with technological developments in Switzerland. Recurring set of questions; buy-in of additional questions possible.
- **The Future of Work Virtual Reality Lab:** Dedicated to exploring whether and how Virtual Reality (VR) technologies can be used to improve the world of work for people; invite broad academic participation and collaboration with practitioners across different sectors and industries



Infrastructure & Labs – Call HS 2021

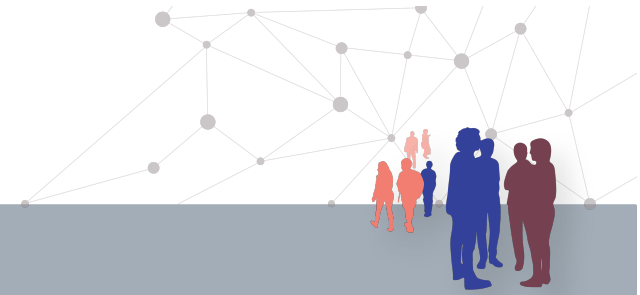
- **Mind the Patient Lab:** The Mind the Patient Lab (MtP Lab) aims to design, develop and evaluate innovative digital decision aids that help facilitate shared decision-making regarding preference-sensitive clinical choices.
- **One Health Infrastructure:** To foster transdisciplinary research, an IT healthcare system at UZH needs further development to allow for the integration of animal and human patients' data. The aim of the project is to pave the way for jointly usable infrastructures to promote collaborative research in human and companion animal health.
- **GIS Hub:** The hub's focus will be on providing support, advice and infrastructure to help students and researchers from across the UZH, and especially in the arts, humanities and social sciences, to realize their own GIS related projects, for example, assisting with data collection strategies, producing maps of research data, carrying out spatial analysis and publishing research results as open data.

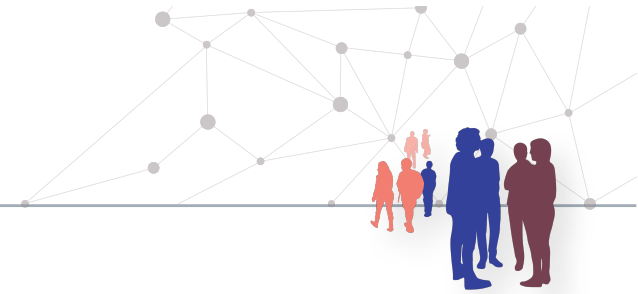


**Universität
Zürich**^{UZH}

Digital Society Initiative

Definition of Infrastructure & Labs





Definition of Infrastructure and Labs

- Jointly usable infrastructures or
- structural vessels to promote collaborative settings for research.
- Enable synergies and new forms of cooperation
- (Potential to develop into an UZH technology platform)

Examples:

- Regular, purpose-oriented meetings of researchers to jointly develop solutions
- Combination of existing infrastructures
- Development of new infrastructure /platforms that are conducive to interdisciplinary cooperation.

Not funded (examples):

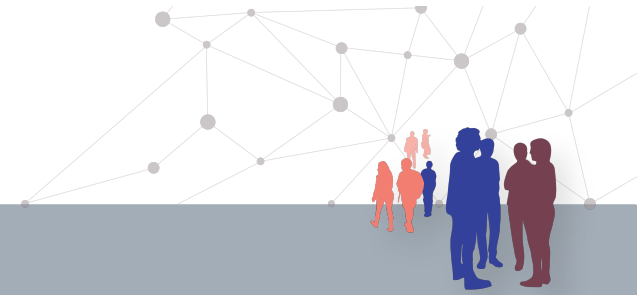
- Improvement of an existing app for a closed user group
- Digitalization of samples/collection or artefacts

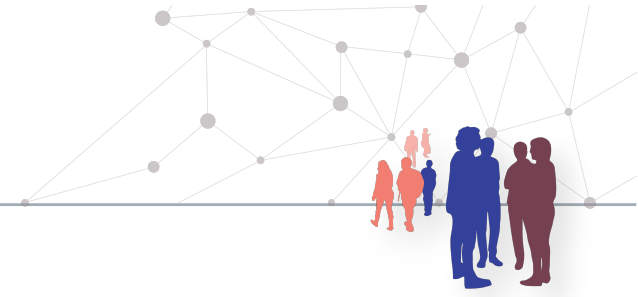


**Universität
Zürich**^{UZH}

Digital Society Initiative

Key Aspects for the Committee Members





Key aspects for the Committee Members

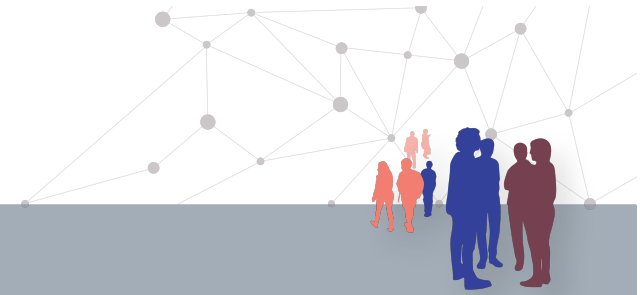
1. Solid application
2. Infrastructure & Labs. No projects. No funding of fellowships.
3. Interdisciplinarity

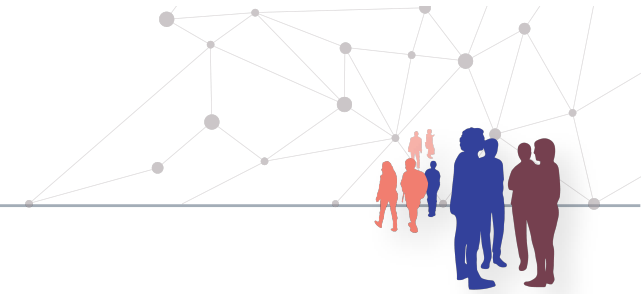


**Universität
Zürich**^{UZH}

Digital Society Initiative

Budget & Matching Funds





Budget & Matching Funds

Budget

- You have to budget the total project first, then decide what should be funded by DIZH (50% of the total project costs) and what is your contribution
- Calculatory overhead (20% of the total project costs) counts as «matching funds»
- Cost for assets are not allowed.

Matching from university funds:

- Direct funds from Betriebskredit, Einrichtungskredit or other university funds from your profit center or institute
- Time of researchers/staff funded by Betriebskredit or other university funds

Matching from third party funds:

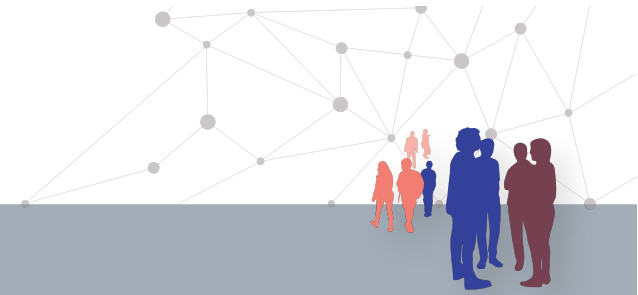
- Direct funds from third party funds if possible / not restricted by funder
- Time of researchers/staff funded by third party funds (if no restriction apply)

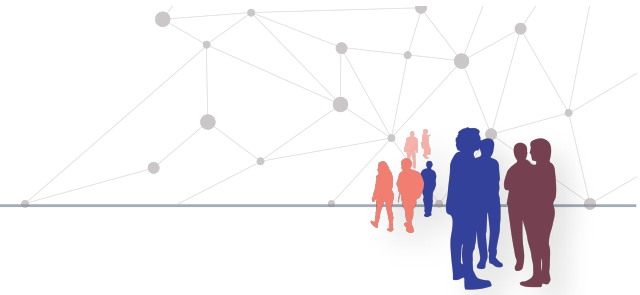


**Universität
Zürich**^{UZH}

Digital Society Initiative

Discussion





Further information

Templates, detailed explanation on matching funds, detailed comments within the budget template

<https://www.dsi.uzh.ch/en/research/dizh/infrastructure-lab.html>

General questions:

dsi-labs@dsi.uzh.ch

Specific questions regarding matching funds or budget template:

gabriele.prohaska@uzh.ch